

Brake Caliper DX 230 FEA

spring activated – electrohydraulically released



Features	Code
Brake Caliper	D
Disc Brake	X
Frame size 230	230
Spring activated	F
Electrohydraulically released	E
Automatic adjustment to accommodate friction block wear	A
Thrusters 454, 455, 465 or 477 are available	454 to 477

Example for ordering

Brake Caliper DX 230 FEA, thruster 455:

DX 230 FEA - 455

Technical Data

Brake disc diameter mm	Brake Caliper DX 230 FEA							
	with thruster 454		with thruster 455		with thruster 465		with thruster 477 C	
	Braking torque		Braking torque		Braking torque		Braking torque	
	min. Nm	max. Nm	min. Nm	max. Nm	min. Nm	max. Nm	min. Nm	max. Nm
355	400	960	650	1 670	800	2 150	950	2 600
400	470	1 130	770	1 970	950	2 550	1 100	3 050
450	550	1 320	900	2 300	1 100	3 000	1 300	3 550
500	630	1 510	1 030	2 650	1 250	3 400	1 500	4 050
560	730	1 740	1 190	3 030	1 450	3 950	1 700	4 650
630	840	2 000	1 370	3 450	1 650	4 550	2 000	5 400
710	970	2 310	1 580	4 020	1 950	5 200	2 300	6 200
Clamping force	9 500 N		16 500 N		21 500 N		25 500 N	
Push force thruster	750 N		1 200 N		1 500 N		1 750 N	
Weight of thruster	15 kg		21 kg		21 kg		31 kg	
Weight of brake without thruster	95 kg		95 kg		95 kg		105 kg	

The braking torques shown in the table are based on a theoretical friction coefficient of 0,4. Braking torques are based on optimum conditioned friction partners.

Technical description

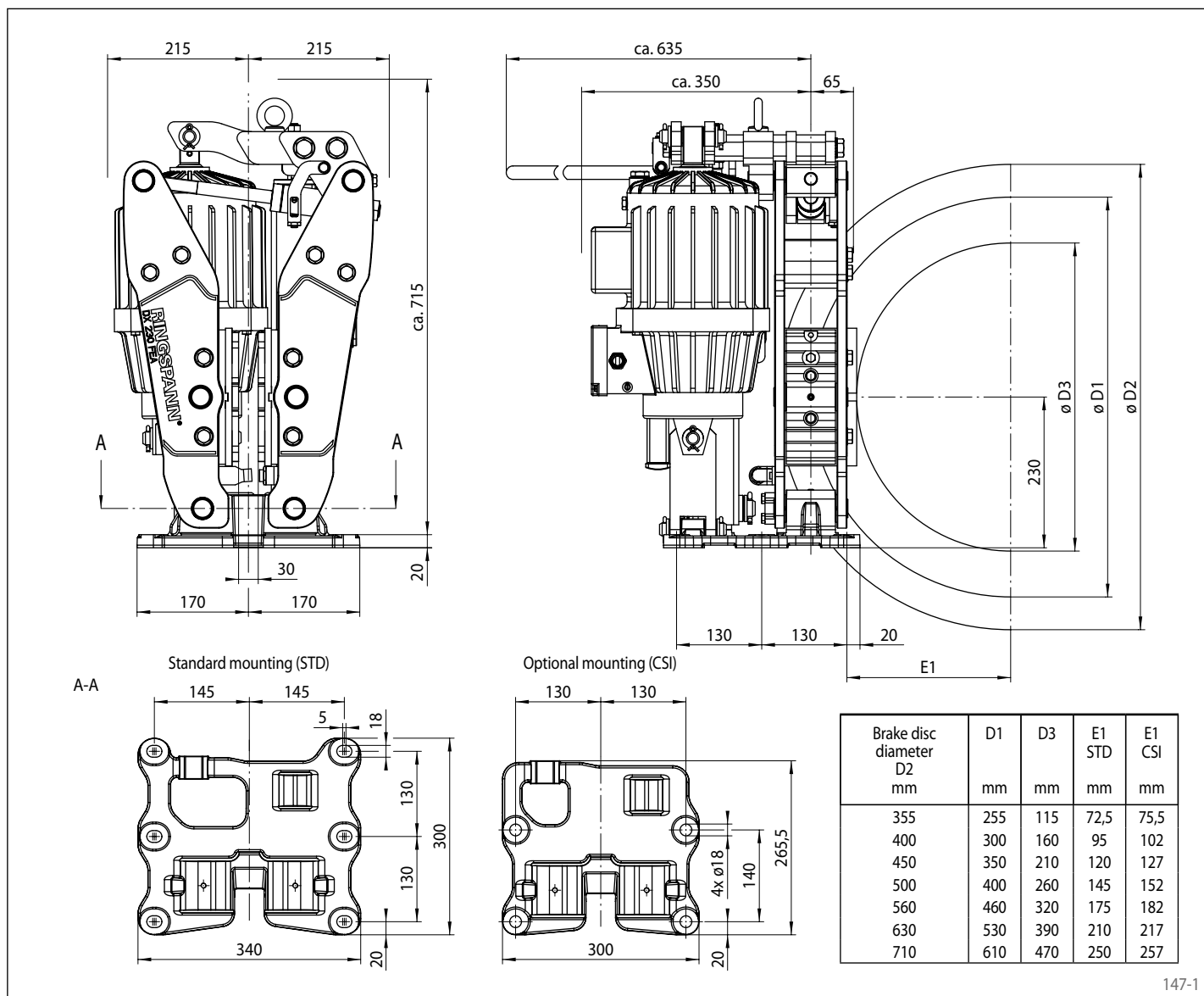
The RINGSPANN DX brakes are mainly used as holding or emergency stop brakes at high circumferential speeds and a high number of switching cycles.

When the power supply is switched off or in the event of a power failure, the brakes close automatically by spring force. The brakes are opened with the help of an electrohydraulic thruster.

Typical applications are hoists and travel drives for cranes, conveyor belt and bucket wheel drives.

Brake Caliper DX 230 FEA

spring activated – electrohydraulically released



147-1

Other features

- Maintenance-friendly steel lever design
- Easy and robust brake alignment and adjustment
- Automatic wear compensation unit
- Self-centering device for equal air gap on both sides between brake lining and brake disc
- Parallel air gap with brake open
- Bolts and tension rods made of stainless steel
- Maintenance free self-lubricating bushings
- Continuous adjustable spring tube unit
- Asbestos free sinter brake linings
- Ambient temperature: -20° to +70° C
- Standard power connection: 3-phase 400VAC/50Hz

Options

- Switching sensors for status signals: "brake open", "brake closed", "brake lining wear limit" and "manual release activated"
- Linear position sensor for monitoring the opening and reserve stroke
- PT100 temperature sensors for monitoring the brake lining temperature
- DMS load measuring cell for monitoring the clamping force
- Terminal box for sensor connection
- Eccentric manual release
- Maritime version (C5-M/CX)
- Special versions for low or high ambient temperatures
- Thrusters with internal lifting and lowering valves
- Thruster in explosion-proof design
- Power connections 3-phase 200-800VAC 50/60Hz
- Other brake disc thicknesses on request
- Base plate according to competition